



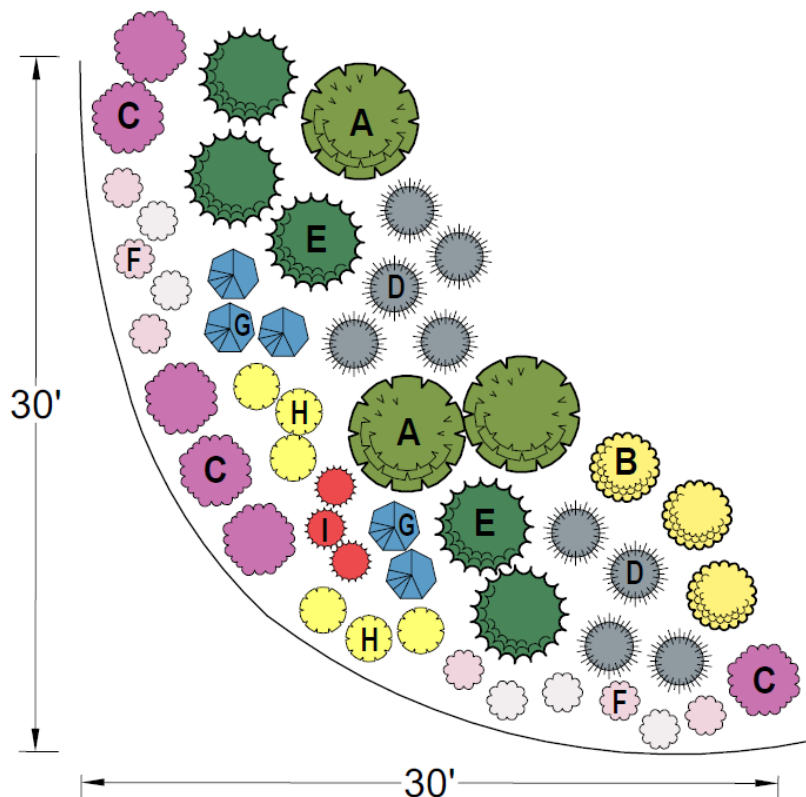
Plant Select[®]
plant smarter

XERISCAPE DESIGN SOLUTIONS

COLORADO WATERSMART NATIVE BORDER

This shrub and perennial border features species and selections of native plants from the drier regions of Colorado. The plants chosen will provide interest in all seasons and evoke the natural beauty of our prairie and foothill habitats.

The water needs of the plants in this border are very low and once established irrigation would only be advised when extended periods of dry and warm weather occur. The design layout can be repeated to cover longer bed areas.



All Spyglass Ridge HOA Landscape & Irrigation Standards remain in effect even when using a pre-approved design plan. For specifics please refer to the Landscape & Irrigation Standards policy found on our website at spyglassridge.org.

PLANT LIST:

Plant Select[®] plants are in bold

- A. **Apache Plume** -or- Tall Blue Rabbitbrush (3)
- B. **Baby Blue Rabbitbrush** -or- Dwarf Leadplant (3)
- C. **Winecups** -or- Colorado Four O'Clock (5)
- D. **Blonde Ambition Blue Grama Grass** -or- The Blues Little Bluestem Grass (9)
- E. **Panchito Manzanita** -or- Soapweed Yucca (5)
- F. **Prairie Lode Sundrops** -or- Tufted Evening Primrose (11)
- G. **Grand Mesa Penstemon** -or- Rocky Mountain Penstemon (5)
- H. **Kannah Creek Buckwheat** -or- Prairie Coneflower (6)
- I. **Bridges' Penstemon** -or- Plains Gayfeather (3)

Owners have the option to modify choice of plants based on availability at the time of installation.

Find more designs and inspiration at plantselect.org!



Designer Loretta Mannix

Northern Front Range horticulturist and landscape designer Loretta Mannix specializes in designing water-wise landscapes. She owns and operates The Horticulture Consultant and offers services including landscape design, horticulture consulting and plant problem diagnosis.

www.thehortconsult.com